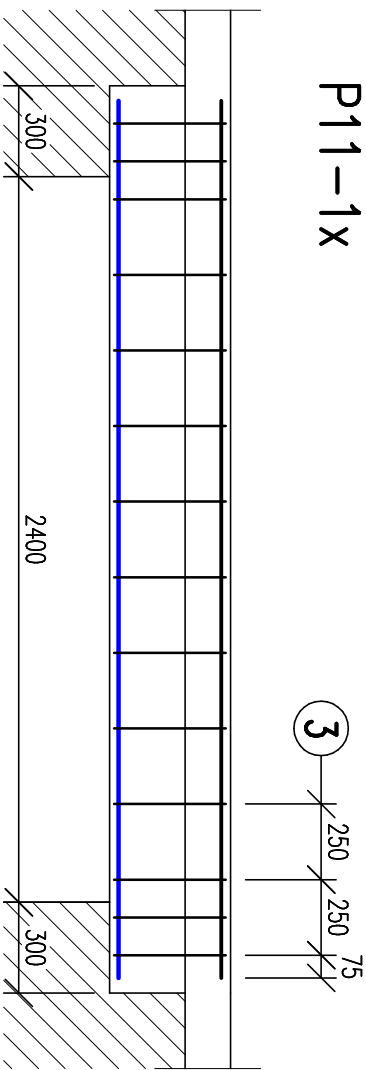
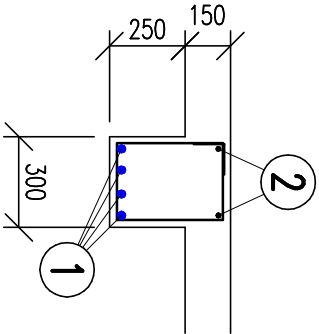


P11-1x

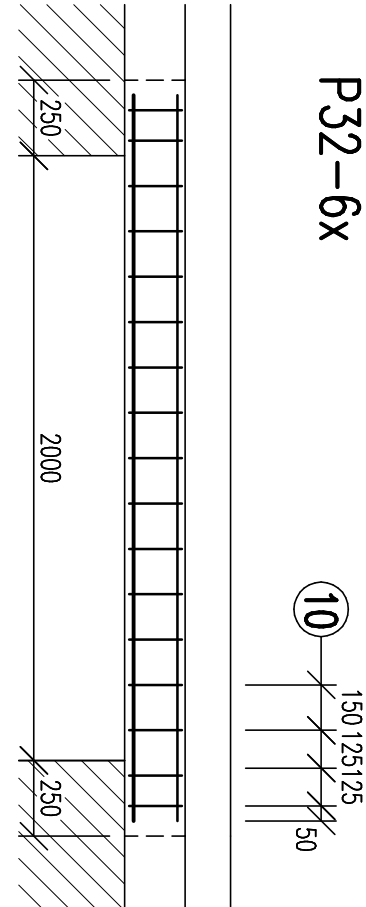


- 1 4 Ø R 14/2900 (KRYTIE 30 mm)
- 2 2 Ø R 12/2900

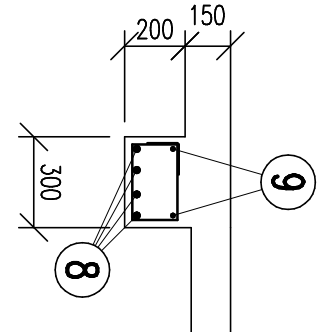


3 Ø R 8/1350-14 ks

P22-6x
P32-6x

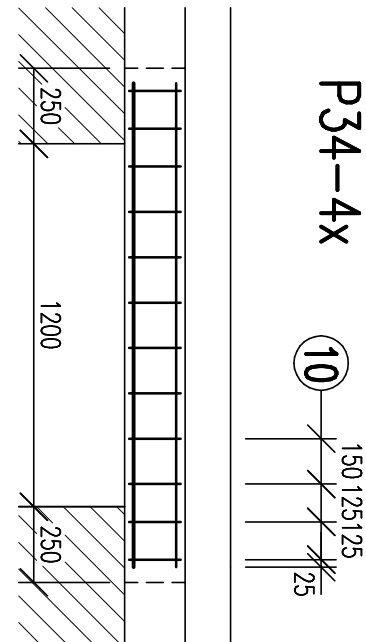


- 8 4 Ø R 12/2400-4x12=48 ks (KRYTIE 30 mm)
- 9 2 Ø R 8/2400-2x12=24 ks

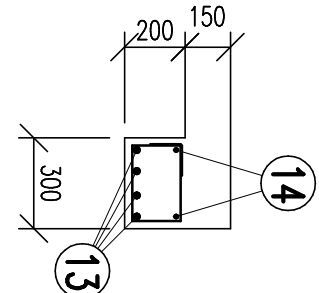


- 10 Ø R 6/950-17x12=204 ks

P24-4x
P34-4x

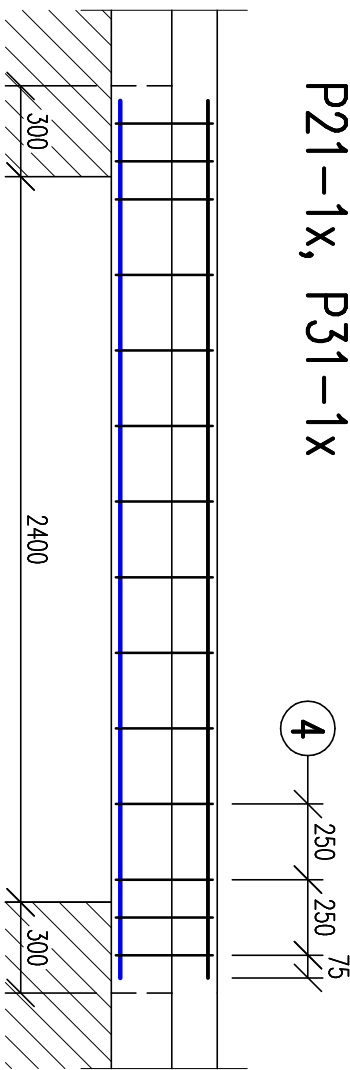


- 13 4 Ø R 12/1600-4x8=32 ks (KRYTIE 30 mm)
- 14 2 Ø R 8/1600-2x8=16 ks

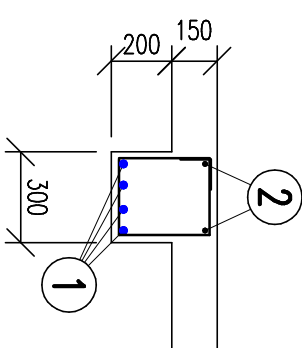


- 10 Ø R 6/950-12x8=96 ks

P21-1x, P31-1x

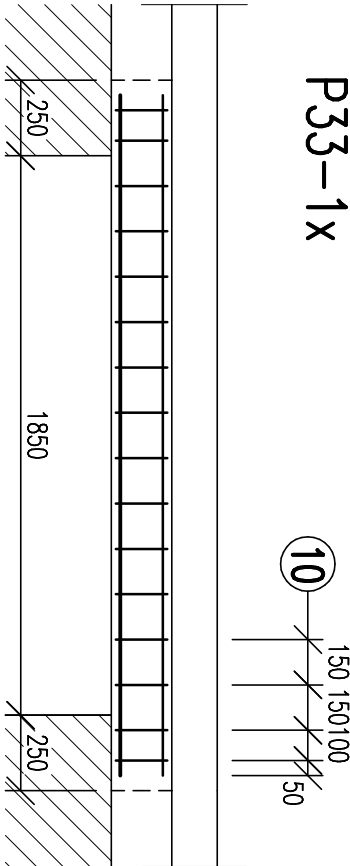


- 1 4 Ø R 14/2900-4x2=8 ks (KRYTIE 30 mm)
- 2 2 Ø R 12/2900-2x2=4 ks

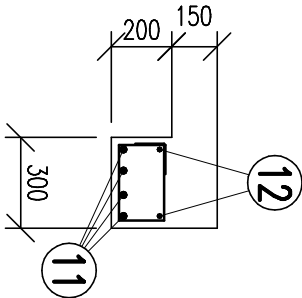


4 Ø R 8/1250-14x2=28 ks

P23-1x
P33-1x

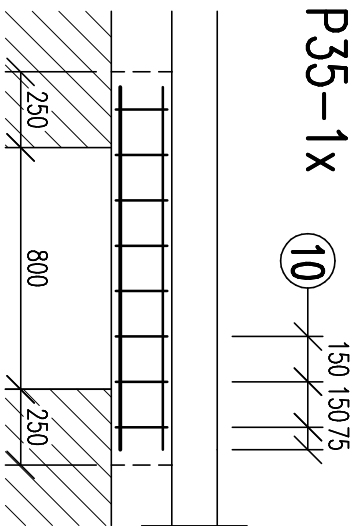


- 11 4 Ø R 12/2250-4x2=8 ks (KRYTIE 30 mm)
- 12 2 Ø R 8/2200-2x2=4 ks

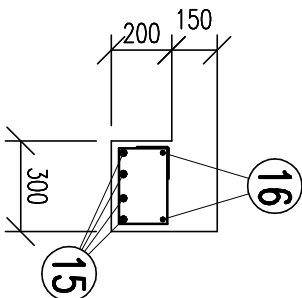


10 Ø R 6/950-16x2=32 ks

P25-1x
P35-1x

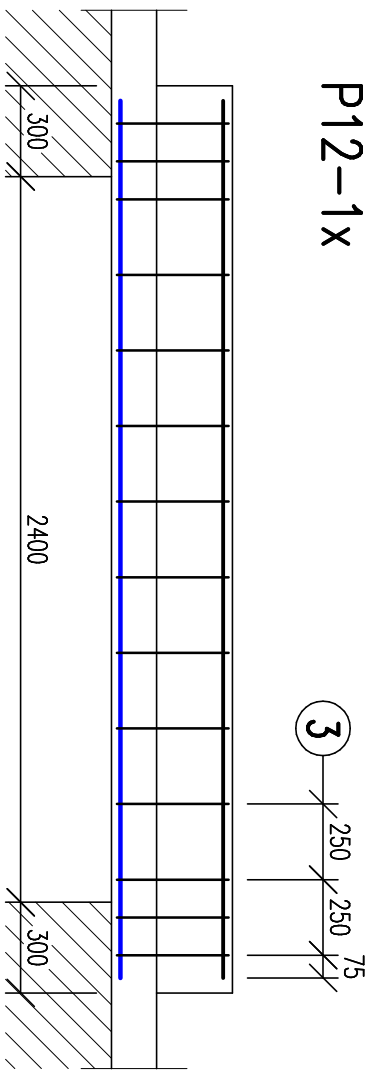


- 15 4 Ø R 12/1200-4x2=8 ks (KRYTIE 30 mm)
- 16 2 Ø R 8/1200-2x2=4 ks

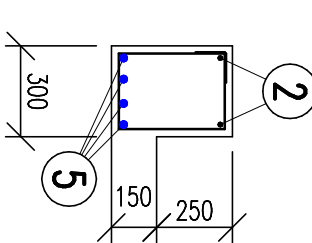


10 Ø R 6/950-8x2=16 ks

P12-1x

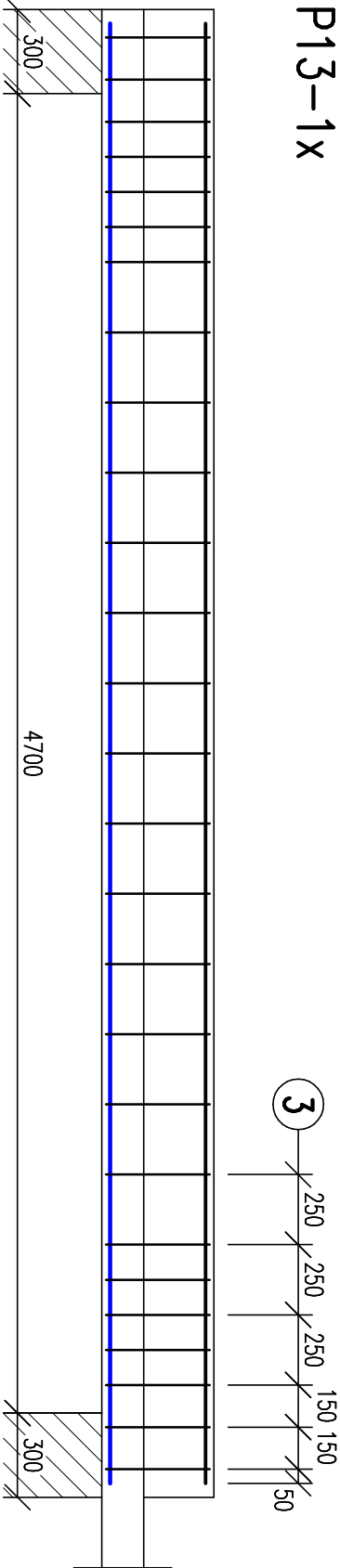


- 5 4 Ø R 16/2900 (KRYTIE 30 mm)
- 2 2 Ø R 12/2900

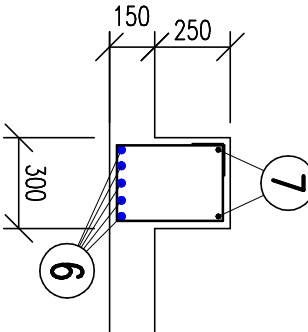


3 Ø R 8/1350-14 ks

P13-1x



3 Ø R 8/1350-14 ks



3 Ø R 8/1350-27 ks

BETÓN C 20/25
OCEĽ 10 505 (R)

VÝKAZ VÝSTUŽE

OZN.	POL.	Ø	DĹŽKA [mm]	ks	DĹŽKA CELKOM [m]				
					Ø 6	Ø 8	Ø 12	Ø 14	Ø 16
P11	1	R 14	2900	4				11,60	
	2	R 12	2900	2				5,80	
	3	R 8	1350	14				18,90	
P21, P31	1	R 14	2900	8				23,20	
	2	R 12	2900	4				11,60	
	4	R 8	1250	28				35,00	
P12	3	R 16	2900	4					11,60
	2	R 12	2900	2				5,80	
	3	R 8	1350	14				18,90	
	6	R 16	5200	5					26,00
P13	7	R 12	5200	2				10,40	
	3	R 8	1350	27				36,45	
P22, P32	8	R 12	2400	48				115,20	
	9	R 8	2400	24				57,60	
	10	R 6	950	204	193,80				
P23, P33	11	R 12	2250	8				18,00	
	12	R 8	2250	4				9,00	
	10	R 6	950	32	30,40				
P24, P34	13	R 12	1600	32				51,20	
	14	R 8	1600	16				20,80	
	10	R 6	950	96	91,20				
P25, P35	15	R 12	1200	8				9,60	
	16	R 8	1200	4		4,80			
	10	R 6	950	16	15,20				
DĹŽKA CELKOM					330,60	201,45	227,60	34,80	37,60
HMOTNOSŤ					[kg·m-1]	0,222	0,395	0,888	1,208
HMOTNOSŤ CELKOM					[kg]	73,0	80,0	202,0	42,0
								59,0	

VYPRACOVANÉ:	ING. MICHAL ŠÍMA	STAVBA:	SABINOV-8 BJ, NAJOMNÝ BYTOVÝ DOM B2, UL. MYJNÍSKÁ	AKRA STUDIO, s.r.o.
ZODP. PROJEKTANT:	ING. MICHAL ŠÍMA	OBJEKT:	S0 01-BYTOVÝ DOM B2	Júrkovcov 31, 080 01 PREŠOV
VEDÚCI PROJEKTANT:	ING. ARCH. JÁN KRÁSNÝ	DIEL:	STATIKA	dkrostudio.p@gmail.com
		OBJEKT:	STATIKA	FORMÁT: 6x44
		OBJEKT:	STATIKA	ZÁK. Č.: 21079
		OBJEKT:	STATIKA	PRÍL. Č.: 10